

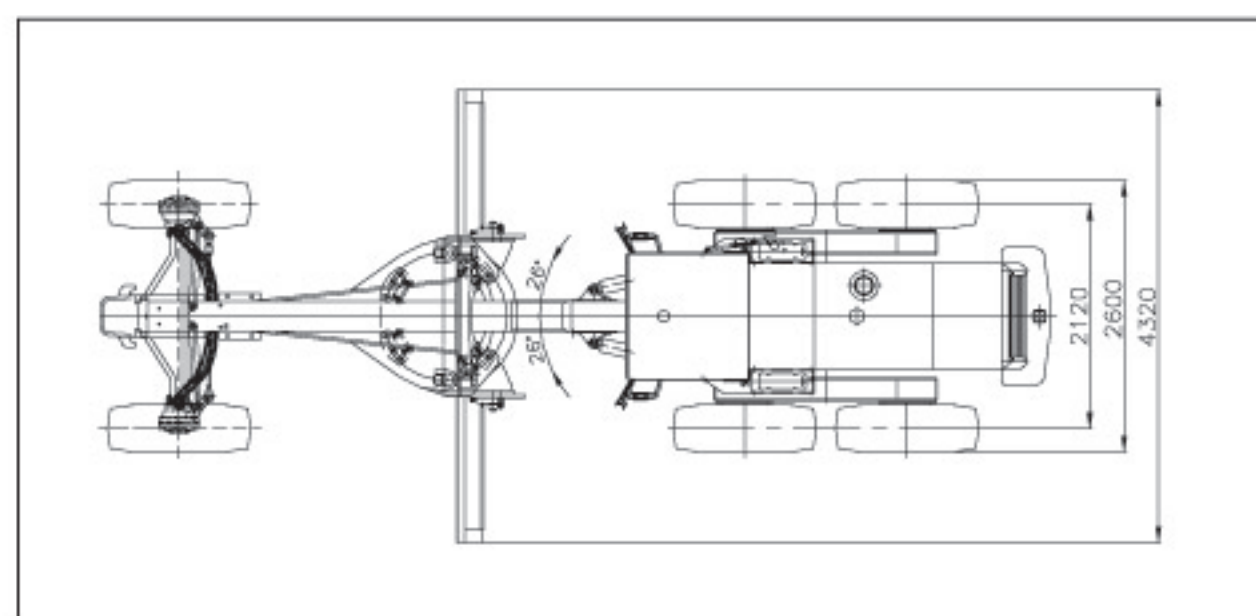
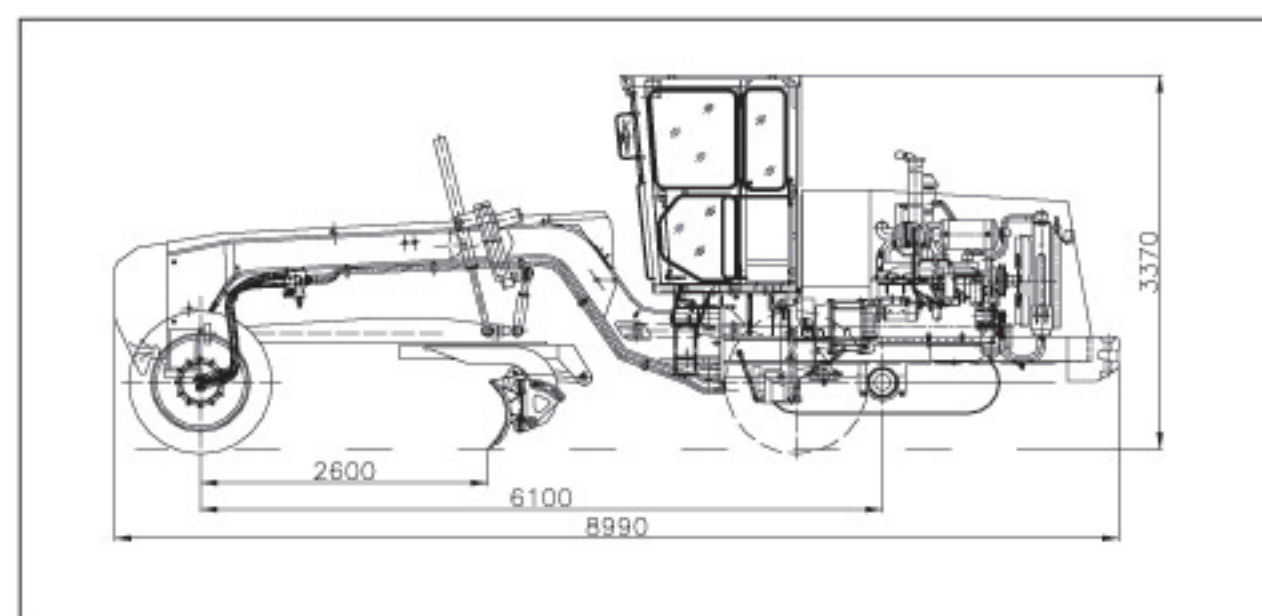
额定功率(Rated Power):162kW@2200rpm 操作重量(Operating Weight):16000Kg



- Equipped with SC11CB220G2B1 engine.
- 6WD assistant driving, hydraulic lock, auto lock/unlock NO-SPIN differential ensures stability and powerful traction.
- Single-handle electro-hydraulic controlled power shift T/M, 6 forward & 3 reverse shifts makes operation easy and convenient.
- Optimum axle load allocation provides excellent stability while grading rough and rocky area.
- Box-Type frame and advanced T/M enable it to complete heavy-duty work.
- A wide working range is accomplished through flexible moldboard suspension system and articulated frame.

外形尺寸 Figure Size

单位 (mm)



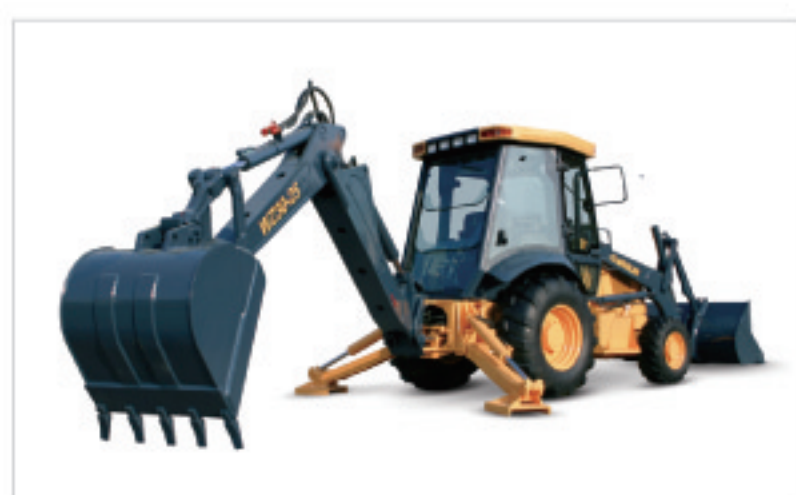
Wheel Loader



Motor Grader



Excavator



Backhoe Loader



Vibratory Roller



Pneumatic Roller



Bulldozer



Crane Truck



Paver



CHANGLIN COMPANY LIMITED

Add: No.898, West Huang He Road, Changzhou,  
Jiangsu, P.R.of China  
P.C: 213136  
Tel: 86-519-86781288 86752400  
Fax: 86-519-86781387  
Http://www.changlin.com.cn  
E-mail:sales@changlin.com.cn

DEALER:

常林股份有限公司



**发动机(Engine)**

型号.....SC11CB220G2B1  
 Model.....SC11CB220G2B1  
 型式.....直喷、涡轮增压、水冷  
 Type.....Direct injection, turbocharged, water cooling  
 额定功率Rated Power.....162kW  
 额定转速Rated Speed.....2200rpm



**变速系统 (Transmission System)**

ZF技术的电液控制动力换挡变速箱，单手柄操作，中位锁定。  
 Electro-hydraulic controlled power shift transmission adopted ZF technology, single handle operation, lock in the neutral.  
 行驶速度(km/h) Traveling speed (at rated engine rpm)

	1 <sup>st</sup>	2 <sup>nd</sup>	3 <sup>rd</sup>	4 <sup>th</sup>	5 <sup>th</sup>	6 <sup>th</sup>
Forward	6.8	10.3	15.3	22.7	32	47
Reverse	6.8	15.3	32			



**前驱系统 (Front Driving System)**

驱动泵型式.....轴向定量柱塞泵  
 Type of driving pump.....Axial constant displacement piston pump  
 驱动泵型号.....FR-L-074B-LS-25-20-NN (萨澳)  
 Model of driving pump.....FR-L-074B-LS-25-20-NN (Sauer)  
 驱动马达型式.....径向变量柱塞马达  
 Type of driving motor.....Radial variable displacement piston motor  
 驱动马达型号.....5420100AA (芬兰黑熊)  
 Model of driving motor.....5420100AA (Finland, Black Bruin)



**制动 (Brakes)**

行车制动.....液压助力作用内涨蹄鼓式制动器。  
 Service brake.....Hydraulic assist actuated on inner-expanding drum brake  
 停车制动.....软轴操纵作用内涨鼓式制动器。  
 Parking brake.....Flexible shaft control actuated inner-expanding drum brake



**刀板变动范围 (Blade Range)**

铲刀移动距离(Moldboard side shift)  
 Right.....815mm  
 Left.....815mm  
 Max. shoulder reach outside rear tires(frame straight)  
 Right.....2000mm  
 Left.....2000mm  
 Max. lift above ground.....450mm  
 Max. grading depth.....535mm  
 Max. blade angle, right or left.....90°  
 Blade tip angle.....29° ~ 77°



**铲刀 (Moldboard)**

铲刀尺寸 Dimensions.....4320mm x 645mm x 16mm



**车桥 (Axles)**

前桥.....中央离地间隙 610mm, 摆角为32°  
 Front axle.....Ground clearance 610mm and oscillation angle(total)32°  
 前轮倾斜角 wheel lean angle.....right or left 20°  
 后桥: 全浮式后桥, 带 NO-SPIN 差速器  
 Rear axle: full-floating rear axle with NO-SPIN differential



**终传动 (Tandem Drive)**

平衡箱摆角 (Tandem oscillation).....11° forward and reverse  
 终传动.....螺旋锥齿轮, 单级减速。  
 Final driving.....Spiral bevel gear, single stage reduction  
 串联传动.....采用双排滚子链  
 Tandem drive.....Double row roller-chains



**转向 (Steering System)**

前轮的最大转向角.....左右各 49°  
 Max. turning range.....left or right 49°  
 车架转向角.....左右各 26°  
 Frame articulation.....left or right 26°  
 最小转弯半径.....7300mm  
 Min. turning radius.....7300mm



**轮胎 (Tyre)**

轮胎规格 Tyre size.....17.5-25-14PR



**驾驶室 (Cabin)**

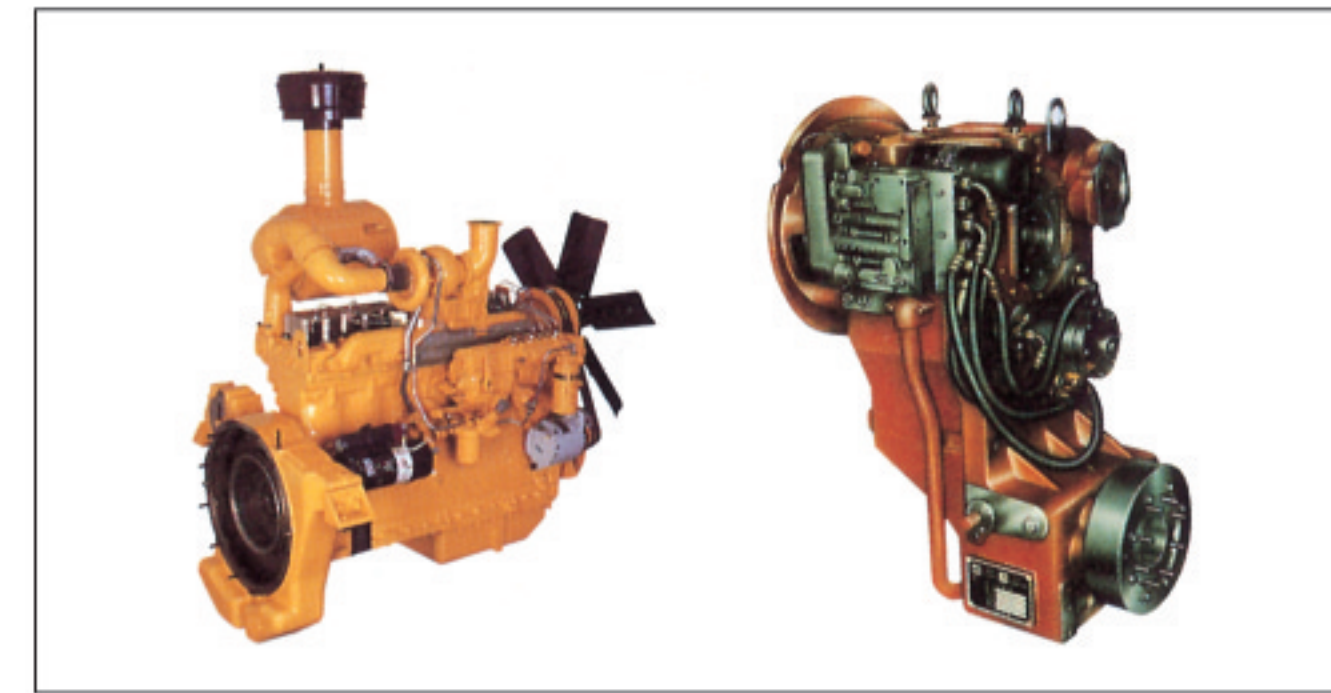
Vibration-absorbed humanistic cabin with adjustable steering wheel and seat, and streamline dashboard provide low noise, air conditioning, comfortable operation and wide eyeshot.



**油量 (Refill Capacity)**

燃油箱 Fuel tank.....350L  
 曲轴箱 Crank case.....27L  
 变速箱 Transmission.....45L  
 后桥 Rear axle.....18L  
 平衡箱(单边) Tandem housing(each).....42L  
 液压系统 Hydraulic system.....70L  
 涡轮箱 Circle reverse housing.....3.8L

**Best Matched Power Train**



- Equipped with SHANG CHAI engine that features strong power and low oil consumption.
- ZF technology transmission with single handle that features perfect performance and easy operation.


**Advanced Assistant Driving**



- Famous brand hydraulic components ensure high reliability.
- 6WD is choiced manually under forward 1st, 2nd and reverse 1st to increase the traction force.


**Optional Attachment**

1. 空调Air conditoner
2. 轮胎Tyre size: 14.0-24-16PR G-2
3. 自动找平仪Automatic leveling device
4. 防滚翻ROPS Frame
5. 推土板Front Blade
6. 前松Scarifier
7. 后松Ripper



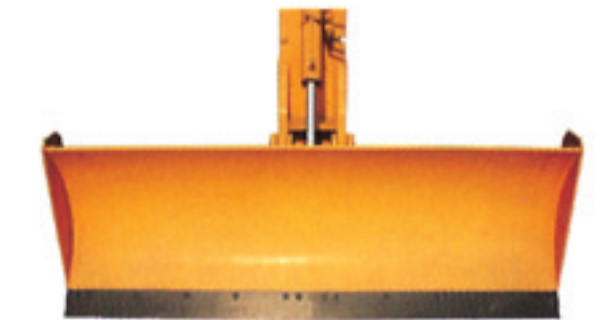
**Scarifier**

- No. of teeth 11
- Digging width 1325mm
- Max. lift above ground 322mm
- Scarifier base 970mm



**Ripper**

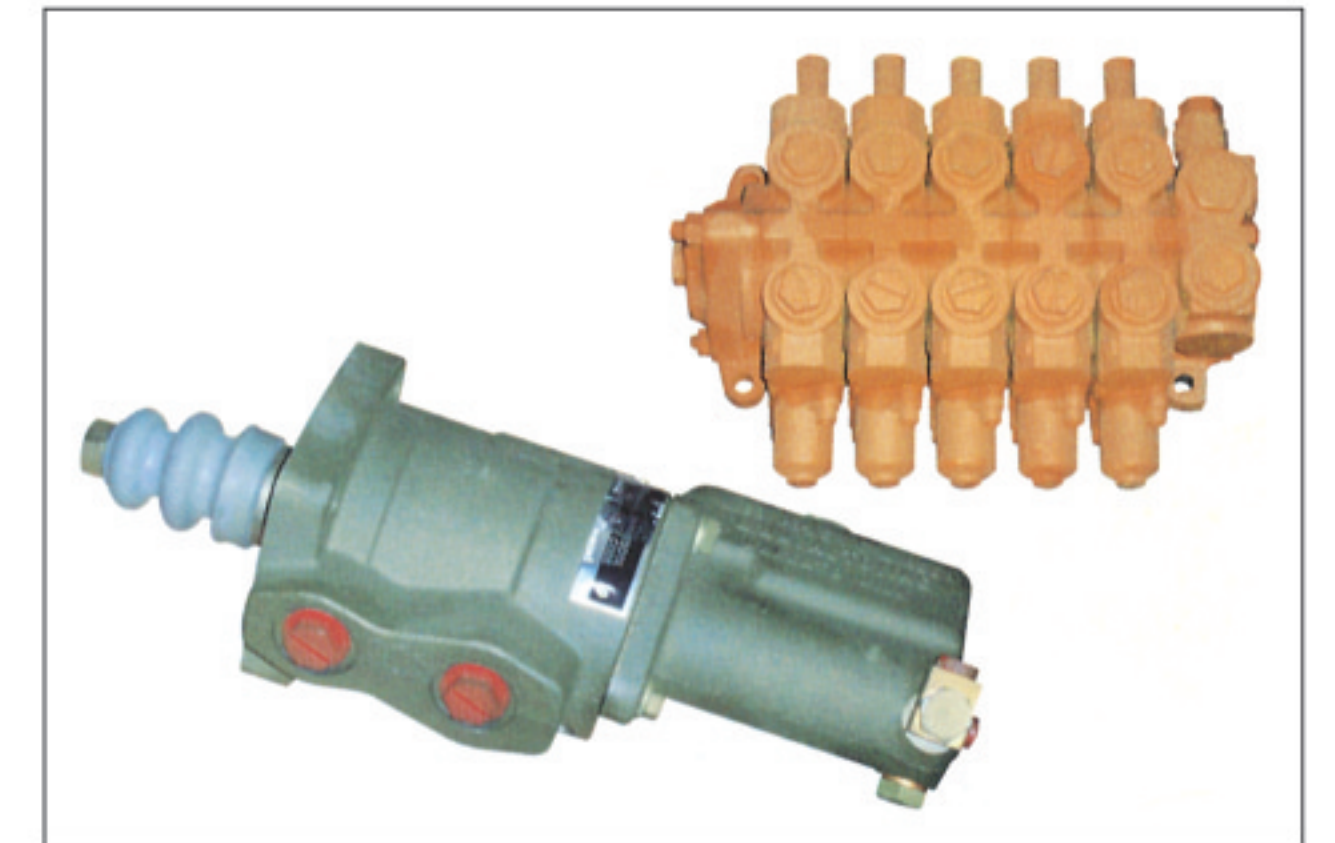
- No. of shanks 3 (max.5)
- Max. digging depth 465mm
- Max. lift above ground 550mm
- Max. digging width 2210mm



**Front Blade**

- Blade width 2501mm
- Max. lift above ground 579mm
- Max. grading depth 125mm

**Imported Multil-way Valve & Booster**



- Adopted imported components in crucial places greatly enhance reliability.

**Comfortable Cabin**



- Full-closed cabin with the visibility up to 47%.