

(额定功率)Rated Power:103kW

(整机重量)Weight:(CLD140-2)15800kg/(CLD140S)17300kg



- Shang Chai 6135AK-8C type engine, means strong power, high torque and excellent reliability.
- Optimum design: The machine appears novel and is reliable, and offers an excellent visibility in working.
- New blade side-tilt function makes earth pushing easier.
- Gearbox adopts separate-structured main shaft, making mounting, dismounting and maintenance easier.
- Updated power train.
- A pilot control can be chosen for working equipment of CLD140 to save operating effort.



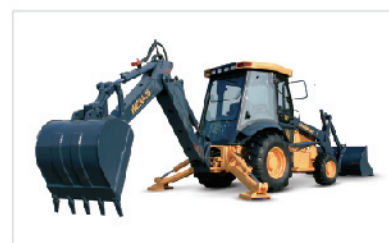
Wheel Loader



Motor Grader



Excavator



Backhoe Loader



Vibratory Roller



Pneumatic Roller



Bulldozer



Crane Truck



Paver



CHANGLIN COMPANY LIMITED

Add: No. 398 West Huanghe Road, Changzhou, Jiangsu,
P.R. of China

P.C: 213136

Tel: 86-519-86781288 86752400

Fax: 86-519-86781387

Http://www.changlin.com.cn

E-mail: sales@changlin.com.cn

DEALER:

常林股份有限公司

发动机 ENGINE

型号.....上柴 6135AK-8C
 Model.....SHANGCHAI 6135AK-8C
 型式.....单行立式 四冲程 半分开式燃烧室
 Type.....Inline vertical four-stroke cycle semi-open combustion chamber
 飞轮功率 Flywheel power.....103kW
 额定转速 Rated Speed.....1700r/min
 缸数-缸径×行程.....6-φ135×150mm
 Number of cylinders-bore×stroke.....6-φ135×150mm
 启动方式.....24V 8.2kW 电动机启动
 Electric starting.....24V 8.2kW Electric starting
 蓄电池.....6-Q-195铅板式12V×2
 Battery.....Lead storage cell, 6-Q-195(12V×2)
 空气滤清器.....K2640X-1a旋风式纸芯滤清器
 Air cleaner.....K260X-1a Paper element cyclone air cleaner
 最低燃油消耗量 Min fuel consumption ratio.....230min

传动装置 TRANSMISSION SYSTEM

主离合器.....湿式多片 非常结全式
 Main clutch.....Wet type, Multiple-disc, non-constantly engaged
 变速箱.....正齿轮 飞溅润滑五种前进档四种后退挡
 Transmission.....Spur gear, splash lubricated, 5 forward and 4 reverse speeds
 中央传动.....螺旋伞齿轮、飞溅润滑
 Bevel gear.....Helical bevel gear, Splash lubricated
 转向离合器.....干式 多片 手动液压助力操作
 Steering clutch.....Dry, multiple disc hand-operated with hydraulic booster
 转向制动器.....干式 带制动 脚踏操作
 Steering brake.....Dry, band brake, foot-actuated
 最终传动.....正齿轮, 二级减速, 飞溅润滑
 Final drive.....Spur gear, double reduction, splash lubricated

行驶速度 TRAVEL SPEED(km/h)

| | | | | | |
|------------|------|------|------|-------|-------|
| | 1st | 2st | 3st | 4st | 5st |
| 前进 Forward | 2.72 | 3.88 | 5.83 | 8.42 | 11.72 |
| 后退 Reverse | 3.27 | 4.66 | 7.00 | 10.09 | |

工作装置液压系统

HYDRAULIC SYSTEM OF WORK EQUIPMENT

工作压力 Working pressure.....12Mpa
 额定流量 (2000r/min).....238L/min
 油泵 Pump.....齿轮泵 Gear pump
 操作阀.....手动滑阀式, 可选配先导操纵
 Control valve.....Hand-operated, sliding type
 油缸: 缸径×杆径×行程.....φ100×φ50×1010

行走装置 UNDER CARRIAGE

驱动轮 Sprocket.....镶块式大链轮 Segmented
 支重轮数 (每侧).....5(3单, 2双)
 Number of track rollers(each side).....5(3 Single, 2 double)
 张力机构 Track tension.....黄油涨紧 Hydraulic-adjusted
 *驱动轮, 支重轮, 托轮和引导轮均采用浮动油封
 Floating seals are used in all sprockets, track rollers, carrier rollers and front idlers

工作装置 WORK EQUIPMENT

推土板形式 Blade type.....直倾铲Straight tilt blade

| | | |
|-------------------------------|-------------------|-------------------|
| | CLD140-2 | CLD140S |
| 宽×高 Width×Height | 3200X1130mm | 4000X970mm |
| 最大提升高度 Max. lift above ground | 1020mm | 1000mm |
| 最大切土深度 Max. dig below ground | 360mm | 350mm |
| 刀刃切削角 Pitch adjustment | 53° | 56° |
| 最大侧倾量 Max. Tilt | ≥300 | ≥300 |
| 铲刀容量 Blade capacity | 4.1m ² | 3.8m ² |

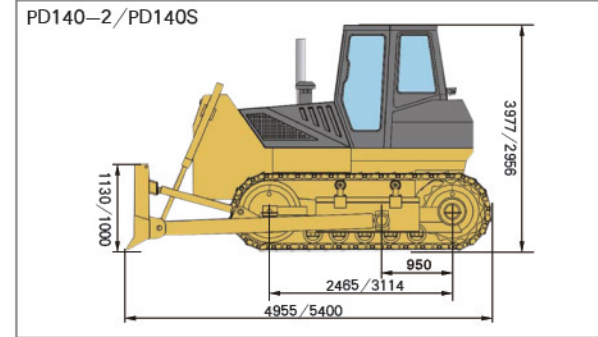
松土器 RIPPER

型式 Type.....三齿
 最大松土深度 Max. dig below ground.....540mm
 最大提升高度 Max. lift above ground.....320mm
 重量 Weight.....1528kg

履带 TRACK

型式 Type.....装配式单履齿 Assembled, single grouser

| | | |
|--|----------|---------|
| | CLD140-2 | CLD140S |
| 节距 Track pitch | 203mm | 203mm |
| 宽度 Track width | 500mm | 1020mm |
| 履带板数 (每侧) Number of track shoes(each side) | 37 | 43 |
| 履带接地长度 Length of track on ground | 2465mm | 3114mm |
| 离地间隙 Ground clearance | ≥300mm | ≥400mm |
| 履带中心距 Track gauge | 1880mm | 2300mm |



Engine features



Due to the improvements having made on burning system, body housing, crank, piston, linkage, cooling pack and lubrication system, the performance of the machine is updated significantly. The machine has become another competitive choice on power for customers.

Excellent Reliability
 Improvements on system of start up, engine cooling and lubricating, air taking-in and cleaning, rearranged power train simplified piping layout, More adaptable to fierce environment when working in plateau, dusty desert and so on.

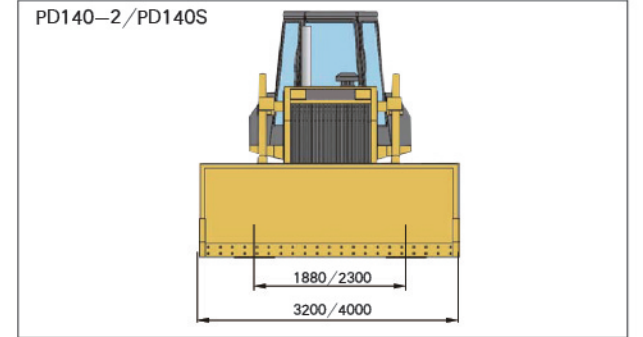
Low Fuel Consumption
 The fuel consumption is lower than the machine of its kind while the drive is more powerful.

Easy Maintenance
 It's easy to get this engine mounted maintained.

Final drive



Double reduction for a reasonable structure and excellent reliability.
 Reasonable structure and efficient power delivery.
 High transmit ratio for reduced load on power transmitting components and steering clutch.



Main clutch



CLD140-2 bulldozer equipped with wet type main clutch, features.
 All engine power can be transmitted directly to transmission, and there is no slip once clutch engaged.
 A thorough and quick disengagement.
 A smooth engagement for reduced impact during machine starting.
 Less rotation inertia of the driven part of the clutch for reduced impact to gears when gear shifting and an easy gearshift.
 Long lifetime.
 Control easily for reduced operator fatigue.

Gearbox



The mechanical powertrain means high efficiency of power delivery, rapid gear shift, long gear life and a more reasonable machine structure.
 It is the transmission with three shafts that realizes the speed shift by engagement change between different gears.