

(发动机型号)Engine:康明斯KTA19-C525 (额定功率)Rated Power:306kW (整机重量)Weight:49500kg



- Equipped with Cummins KTA19-C525 engine, more powerful and more reliable.
- Hydraulic gearshift transmission for easier gear shifts and lower impacts.
- 3-element, single stage, single phase torque converter for higher efficiency and bigger capacity.
- Newly cab for a wide view. ROPS-FOPS structure for safety.
- Three-stage alarm electron monitor system effectively monitors the movement of the machine.
- Implement control is piloted for less operating efforts. Hydraulic system effects according to the load feedback to save fuel.
- More pleased appearance; Improved operating comfort.
- New elastic and shock absorption track frame for increased adhesion force and added wheel life.
- Centralized lubrication for easy maintenance.
- Electric fuel feeder for easy fuel feeding.



Wheel Loader



Motor Grader



Excavator



Backhoe Loader



Vibratory Roller



Pneumatic Roller



Bulldozer



Crane Truck



Paver



CHANGLIN COMPANY LIMITED

Add: No. 398 West Huanghe Road, Changzhou, Jiangsu,
P.R. of China

P.C: 213136

Tel: 86-519-86781288 86752400

Fax: 86-519-86781387

Http://www.changlin.com.cn

E-mail: sales@changlin.com.cn

DEALER:

常林股份有限公司

发动机 ENGINE

型号 Model.....Cummins 康明斯 KTA19-C525
 型式.....增压立式四冲程、PT泵喷射
 Type.....Turbocharged Vertical Four-Stroke,
 PT Pump Injection
 飞轮功率 Flywheel power.....306kW
 额定转速 Rated Speed.....2000r/min
 缸数-缸径×行程.....6-φ159×159mm
 Number of cylinders-bore×stroke.....6-φ159×159mm
 启动方式.....9kW/24V 电动机启动
 Electric starting.....Electric starting motor 9kW/24V
 蓄电池 Battery.....24V 200L
 空气滤清器.....干式、水平式、带空气除尘器
 Air cleaner.....Dry horizontal type with precleaner
 最低燃油消耗量 Min fuel consumption ratio.....217g/kw·h

传动装置 TRANSMISSION SYSTEM

液力变矩器.....三元件, 单级, 单相
 Torque converter.....3-element, single-stage, single-phase
 变速箱.....手操纵液压换挡、行星齿轮、
 多片离合器式、齿轮泵压送强制润滑, 前进3档, 后退3档
 Transmission.....Hand-operated, Hydraulic shift, Planetary
 gear, multiple-disc clutch, hydraulic-actuated, forced lubrication by
 gear pump, 3 forward and 3 reverse speeds
 中央传动.....螺旋伞齿轮、飞溅润滑
 Bevel gear.....Helical bevel gear, Splash lubricated
 转向离合器.....湿式多片、弹簧压紧,
 手动液压助力操作, 液压分离
 Steering clutch.....Wet, Multiple disc, Spring loaded,
 Hand-operated with booster and hydraulic-released
 转向制动器.....湿式、带式、液压助力联动操纵
 Steering brake.....Wet, band brake, operated with hydraulic booster
 最终传动.....一级正齿轮组, 一级行星齿轮组, 飞溅润滑
 Final drive.....One Reduction, Interplanetary Gear,
 one Reduction, splash lubricated spl

工作装置液压系统

HYDRAULIC SYSTEM OF WORK EQUIPMENT

工作压力 Working pressure.....20Mpa
 额定流量 (1700r/min).....264L/min
 油泵 Pump.....齿轮泵 Gear pump CBZb4160T
 操作阀.....液压滑阀式, 负荷反馈, 先导操纵
 Control valve.....operated plunger, loaded feedback,
 servo controlling
 油缸: 缸径×杆径×行程.....φ140×φ95×1440mm
 Cylinder, Bore×Rod×Stroke.....φ110×φ65×1440mm

行走装置 UNDER CARRIAGE

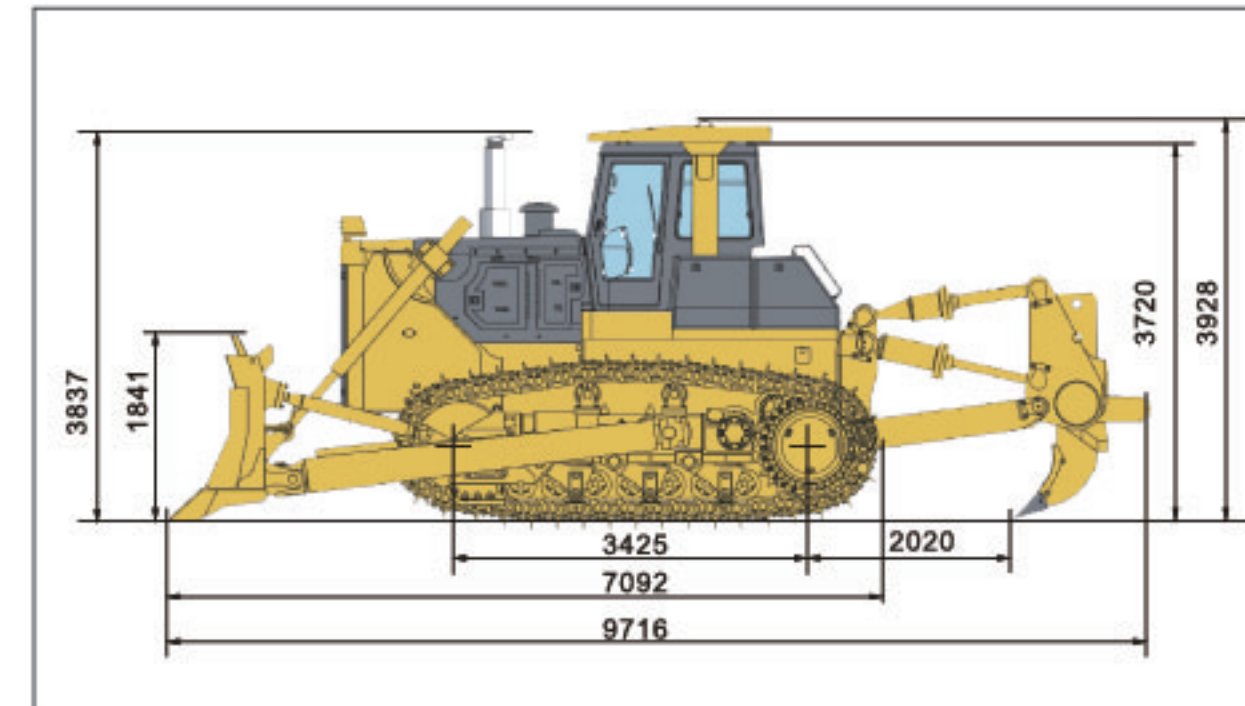
驱动轮 Sprocket.....镶块式大链轮 Segmented
 支重轮数 (每侧).....7(4单, 3双)
 Number of track rollers(each side).....7(4Sing, 3double)
 张力机构 Track tension.....黄油涨紧 Hydraulic-adjusted
 *驱动轮, 支重轮, 托轮和引导轮均采用浮动油封
 Floating seals are used in all sprockets, track rollers, carrier rollers
 and front idlers

工作装置 WORK EQUIPMENT

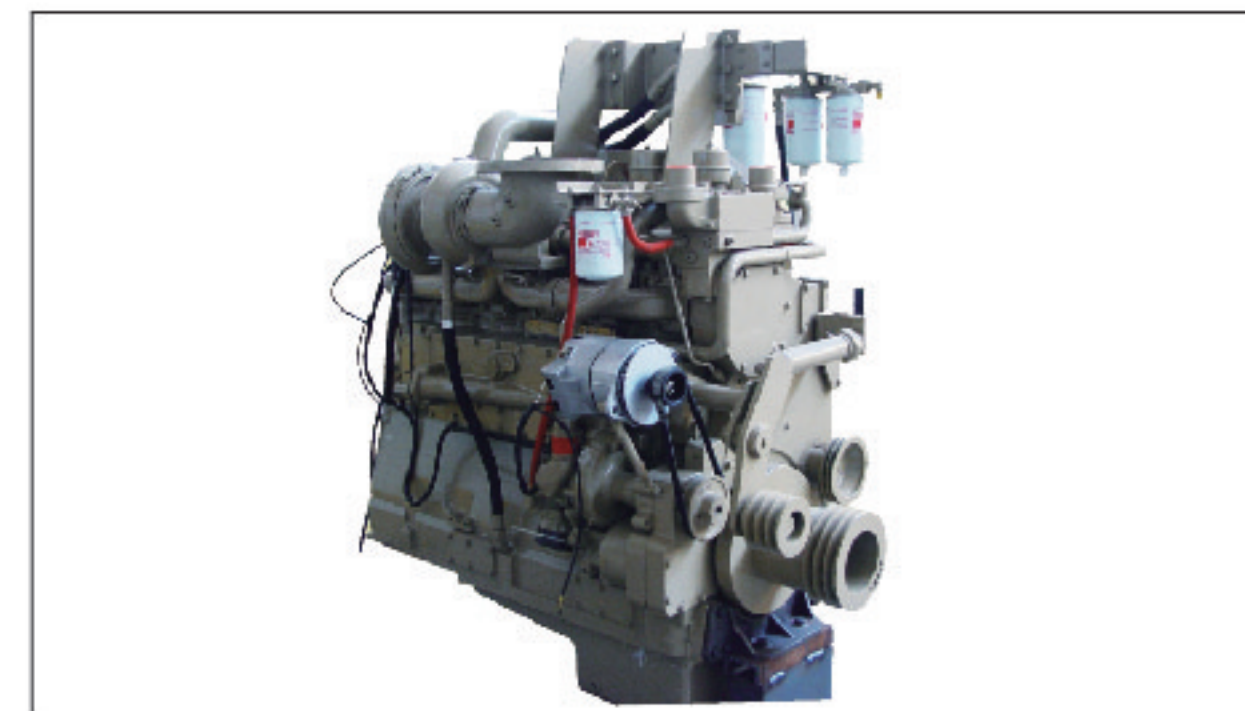
推土板形式 Blade type.....半U Semi-U blade
 宽×高 Width×Height.....4314×1841mm
 最大提升高度 Max. lift above ground.....1620mm
 最大切土深度 Max. drop below ground.....749mm
 刀刃切削角 Pitch adjustment.....52°
 最大侧倾量 Max. Tilt.....1000mm
 铲刀容量 Blade capacity.....14.6m³

行驶速度 TRAVEL SPEED(km/h)

	1st	2st	3st
前进 Forward	3.4	6.7	12.2
后退 Reverse	4.2	8.0	14.8



Engine features

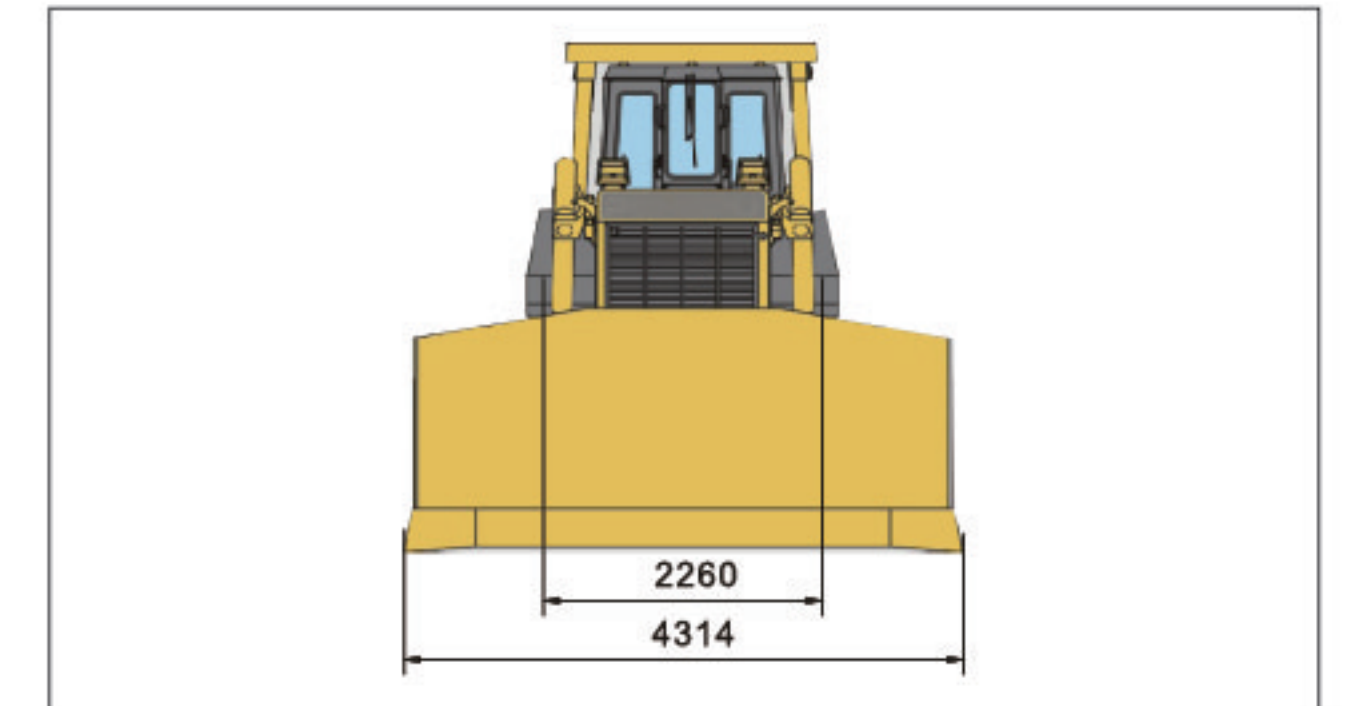


- Fuel direct injection to reduce the fuel consumption.
- 4 valves per cylinder for high horsepower and lower fuel consumption.
- PT fuel system, Cummins patent technology.
- Induction hardened crankshafts and camshaft for improving reliability and durability.
- Drop forged connecting rod, super long life.
- Replaceable valve seat inserts and guides to maximize the cylinder head life.
- Wet and replaceable cylinder liners.
- Offset piston pin to minimize the cavitation of cylinder liner.
- Minimum oil consumption.

The Final Driving



- The final drive adopts double reductions of Spur gear pairs, planetary gear pairs to multiple torque and the power is transmitted to travel mechanism by driving gears. It features splash Lubrication and floating oil seal.



Torque Converter



- The torque converters are of the single stage, single phrase, 3 elements hydraulic type with reasonable structure and excellent reliability, which provide optimum matching with the machines. The outstanding transmissions comparing to the normal ones means the automatic adjustment to the field condition, gradually speed change, improved machine lifetime and traveling ability, easy maintenance, improved working comfort and torque limit set protection function.

Gear box



- This machine is equipped with transmission of planetary gear and multi-discs clutch hydraulic engaged and force lubricated (five transmitting lines in total). Forward 3 speeds and reverse 3 speeds can be gained hydraulically by actuating control valve.